



COMPANY PROFILE COMPANY P
PANY PROFILE COMPANY PROFILE
PROFILE COMPANY PROFILE COM
E COMPANY PROFILE COMPANY

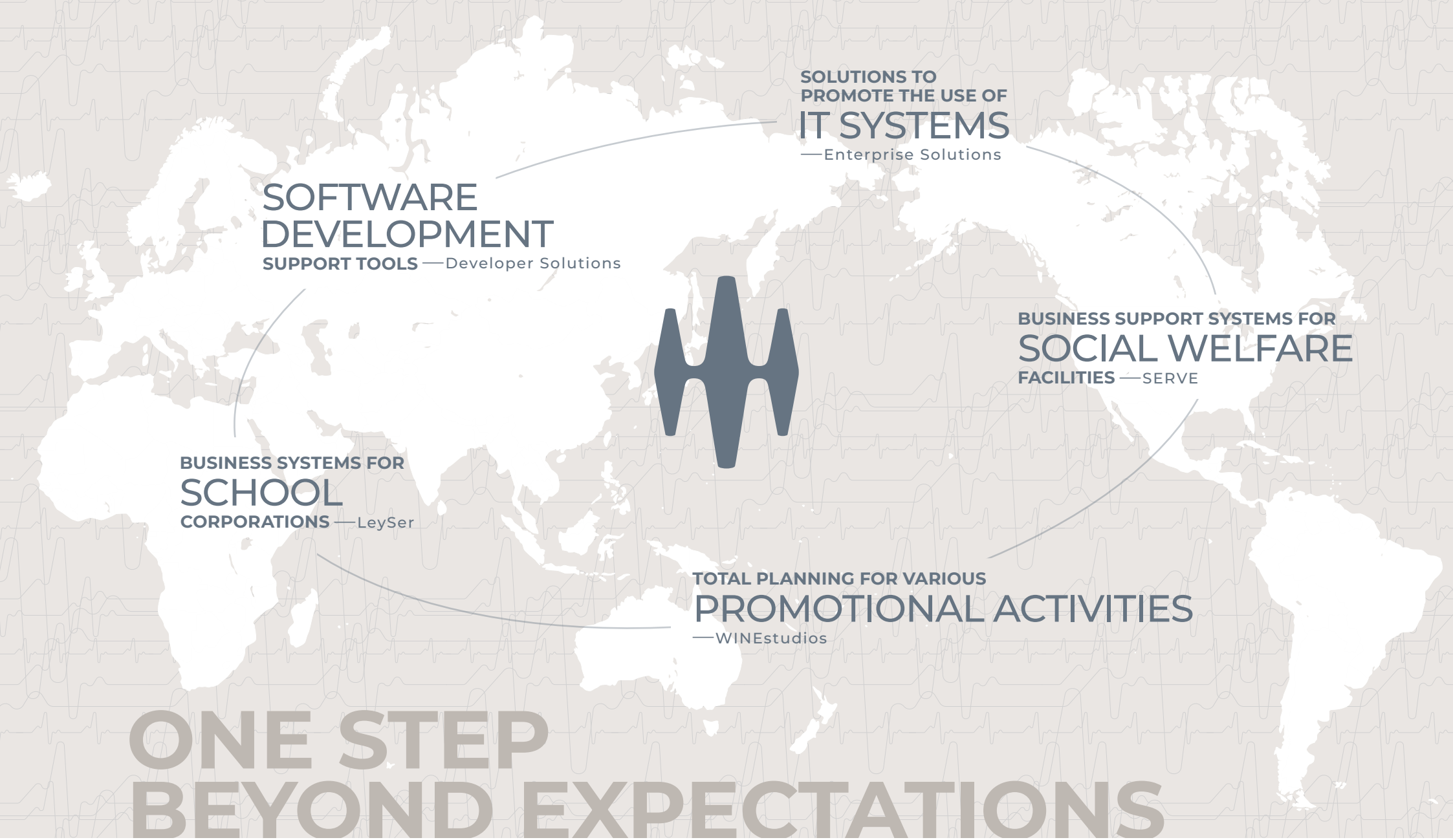


CONTINUING TO CREATE HIGH QUALITY AND RELIABLE VALUE.

Are we providing high-quality solutions?

Are we building relationships on trust through our actions?

We use these two questions as our guide
as we continue to grow as a high value global company.



**SOLUTIONS TO
PROMOTE THE USE OF
IT SYSTEMS**
—Enterprise Solutions

**SOFTWARE
DEVELOPMENT**
SUPPORT TOOLS —Developer Solutions

**BUSINESS SUPPORT SYSTEMS FOR
SOCIAL WELFARE
FACILITIES** —SERVE

**BUSINESS SYSTEMS FOR
SCHOOL
CORPORATIONS** —LeySer

**TOTAL PLANNING FOR VARIOUS
PROMOTIONAL ACTIVITIES**
—WINEstudios

ONE STEP BEYOND EXPECTATIONS

**MESCIUS Operates Several Businesses in
Different Industries.**

The unified vision for all of our businesses is to create and provide products and services that contribute to society, are beneficial, and are one step ahead of our customers' expectations. We are not bound by existing frameworks but share new ideas generated around the world and develop products and services with an eye on industry trends.

SOFTWARE DEVELOPMENT SUPPORT TOOLS

Developer Solutions

Development Solution Tool with a Cumulative Sales Record of Over 1,2 Million Licenses

Our development solutions business started more than 40 years ago with the goal of becoming the best partner for developers. Since then, we have been providing software that improves the development productivity of business systems and web services and the functionality of their applications for more than 40 years.

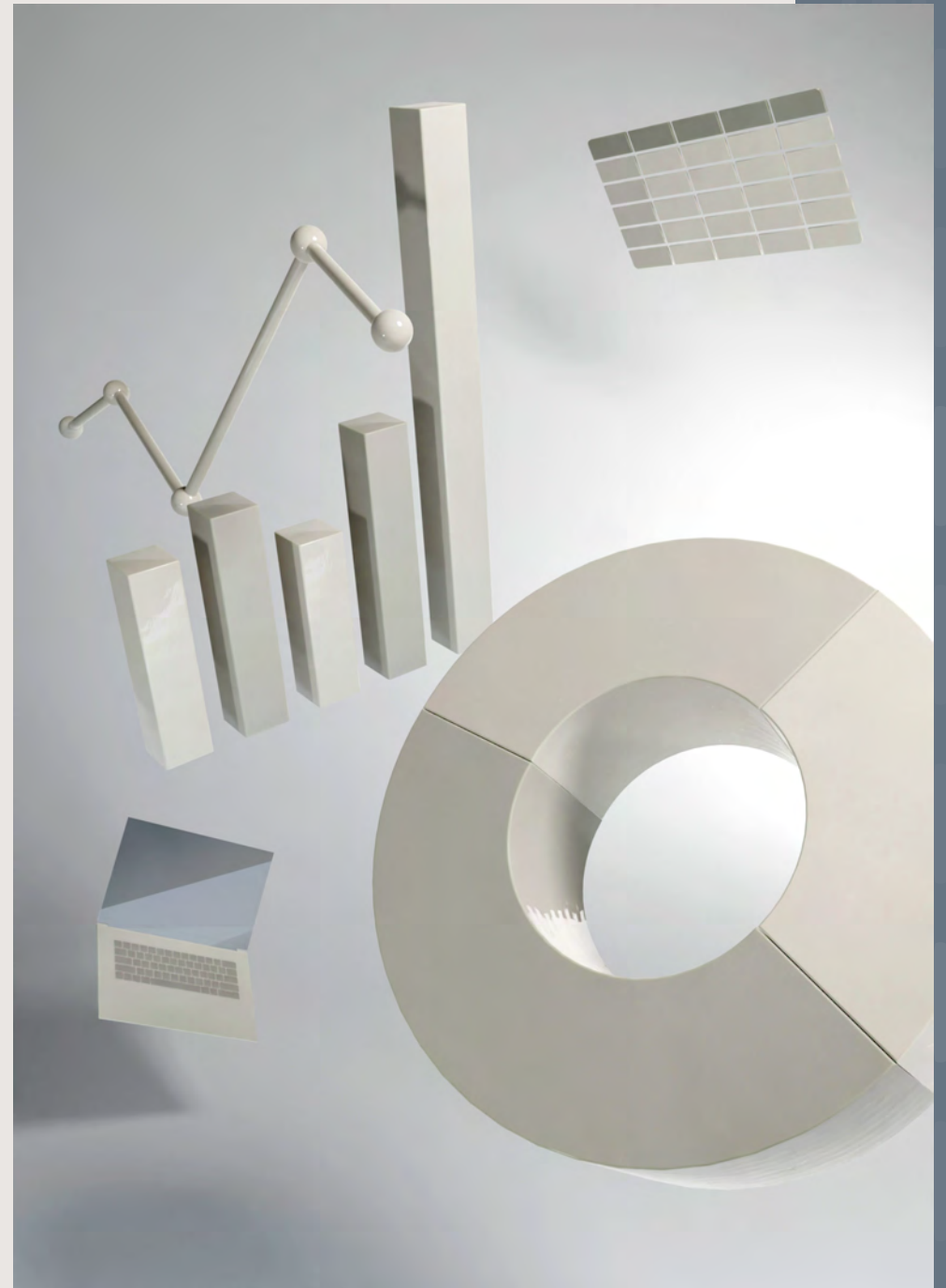
We have sold more than 1.2 million software licenses to date, and with more than 250,000 companies using our software worldwide.

DIVISION WEBSITE



BUSINESS EXPANSION AREAS

Japan, the United States,
South Korea



SOLUTIONS TO PROMOTE THE USE OF IT SYSTEMS

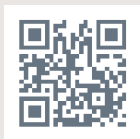
Enterprise Solutions

Providing More Accessible and Easier-To-Use Systems to Solve Corporate Digital Issues

IT has become an important business infrastructure for information sharing and communication, in addition to processing business data such as sales and production management. There is also an active movement to create new value through digitization. At the same time, however, many companies are facing challenges because their on-site and system department systems have not been able to keep up with the changes.

Against this backdrop, the Enterprise Solutions Division proactively adopts no-code and low-code technologies that allow systems to be built without IT specialists, and provides a number of solutions to improve digital operations in a variety of industries and occupations.

PRODUCT WEBSITE



Wyn Enterprise

BUSINESS EXPANSION AREAS

Japan, the United States,
South Korea



Business System to Support School Management Introduced in more than 3,600 Private Schools Nationwide

Our product lineup is tailored to the practical needs of private schools, and our extensive pre- and post-introduction support system has earned us a high reputation among schools for 40 years. We continue to provide easy-to-understand operability and cutting-edge technology to support the systemization of office work in all private schools, from kindergartens to junior high and high schools, universities, and vocational schools.

In addition to valuable systems for school operations, we are also developing convenient apps for teachers, staff, and parents. We will continue to provide services tailored to the needs of schools, drawing on the expertise we have accumulated over the years.

DIVISION WEBSITE



BUSINESS EXPANSION AREAS

Japan



BUSINESS SUPPORT SYSTEMS FOR SOCIAL WELFARE FACILITIES

SERVE

More than 30 Years of Providing Business Systems to Daycare Centers and other Social Welfare Facilities We are Confident in our Wide Range of Services and Support

Social welfare facilities provide services to children, older adults, and people with disabilities. We want to deliver a buffer to the hectic daily lives of those who work there. The Serve system was created with this in mind and has been installed at more than 3,330 facilities.

We provide a wealth of solutions and friendly support, including tools that reduce the burden of administrative tasks, systems such as accounting and payroll that support operations, website production and management, and free seminars and columns that are useful for daily operations.

DIVISION WEBSITE



BUSINESS EXPANSION AREAS

Japan



“Creative Partners” who find Value and Discover Possibilities

Concept, visuals, video, promotion, production... We are a creative partner that not only plans in various genres but also comprehensively handles the final implementation of the project to find solutions to public relations issues for private companies, educational institutions, public organizations, etc.

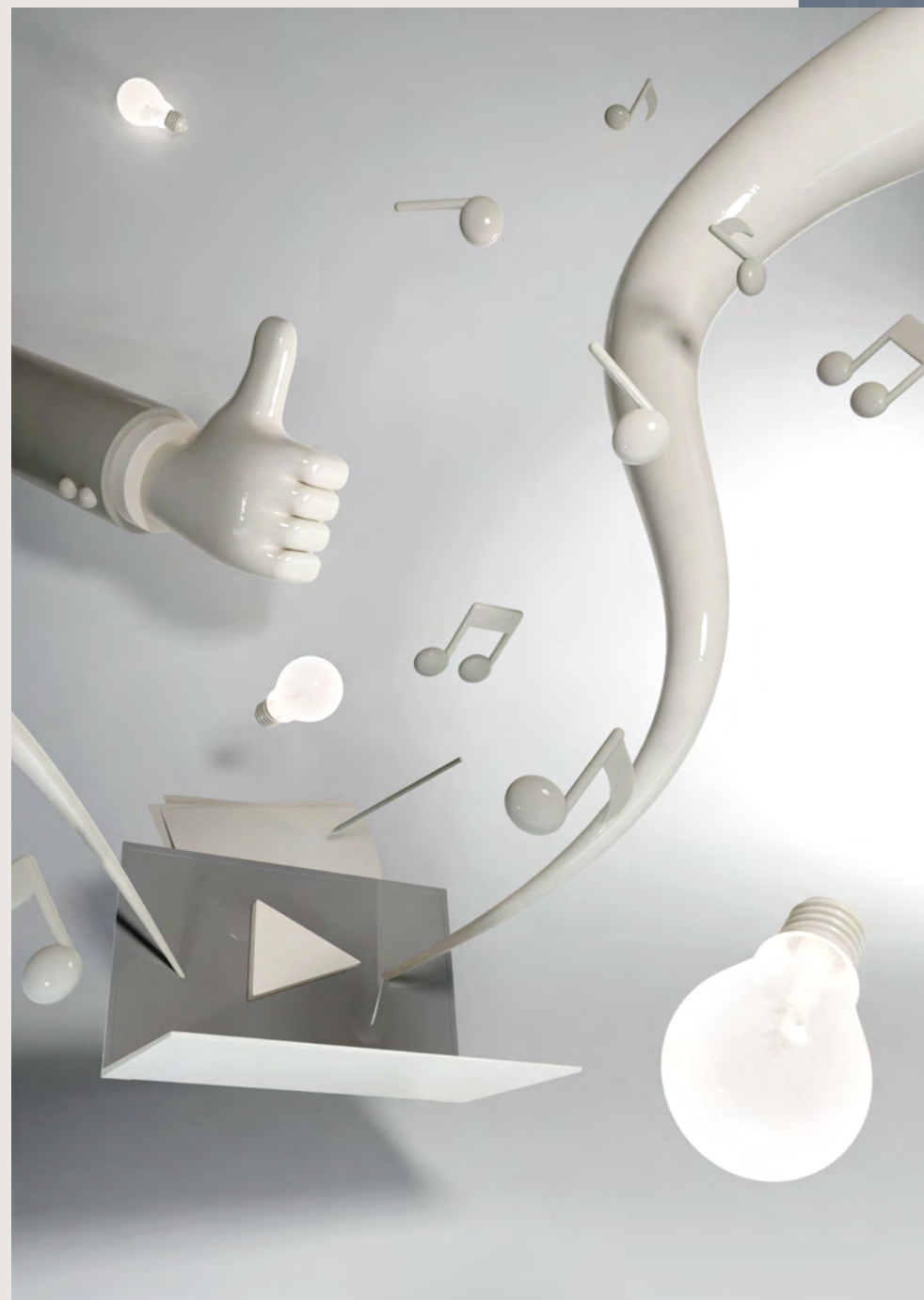
In addition to brilliant creators and experienced filming and editing technical staff, we also have a filming studio and editing room in a rich natural environment. In our creative work, we apply the knowledge, technology, and networking skills we have cultivated to create new value for society.

DIVISION WEBSITE



BUSINESS EXPANSION AREAS

Japan



COMPANY INFORMATION

COMPANY PROFILE

TRADE NAME	MESCIUS inc. (abbreviated as MESCIUS)
ESTABLISHED	May 1980
CAPITAL	10 million yen
REPRESENTATIVE	Naoyuki Baba, CEO
NUMBER OF EMPLOYEES	Japan: 264 employees Overseas: 59 employees
AFFILIATIONS	<ul style="list-style-type: none">• Specified non-profit corporation ASP, SaaS, IoT Cloud Consortium (ASPIC)• Salesforce.com Inc. certified "Application Partner"• Specified non-profit corporation AppExchange Consortium• Cybozu Inc. certified "Cybozu Official Alliance Partner"• MIJS Consortium

OFFICES

JAPAN LOCATIONS

HEADQUARTERS	3-1-4 Purple Hills, Izumi-ku, Sendai, Miyagi 981-3205, Japan
KANTO BRANCH OFFICE	Kawaguchi Center Bldg. 3F, 4-1-8 Honcho, Kawaguchi, Saitama 332-0012, Japan
KANSAI BRANCH OFFICE	SYNTH×Business-Airport, Breeze Tower 2F, 2-4-9 Umeda, Kita-ku, Osaka 530-0001, Japan

OVERSEAS LOCATIONS

U.S.	211 North Whitfield Street, 7th Floor, Pittsburgh, PA 15206, USA
SOUTH KOREA	B-1107 (D-TECH Tower) , 33 Gwacheon-daero 7-gil, Gwacheon-si, Gyeonggi-do, Republic of Korea ZIP: 13840